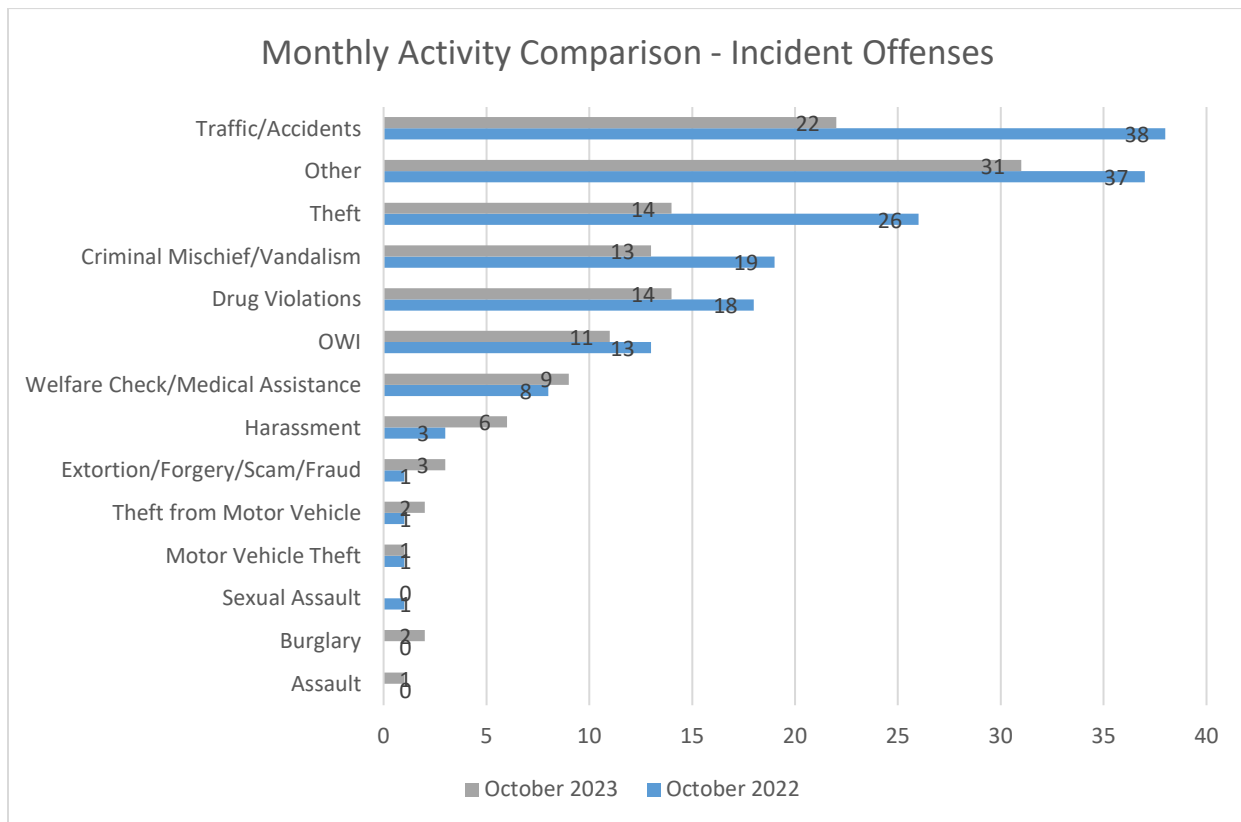


ISU PD MONTHLY ACTION UPDATE
10/1 – 10/31/2023

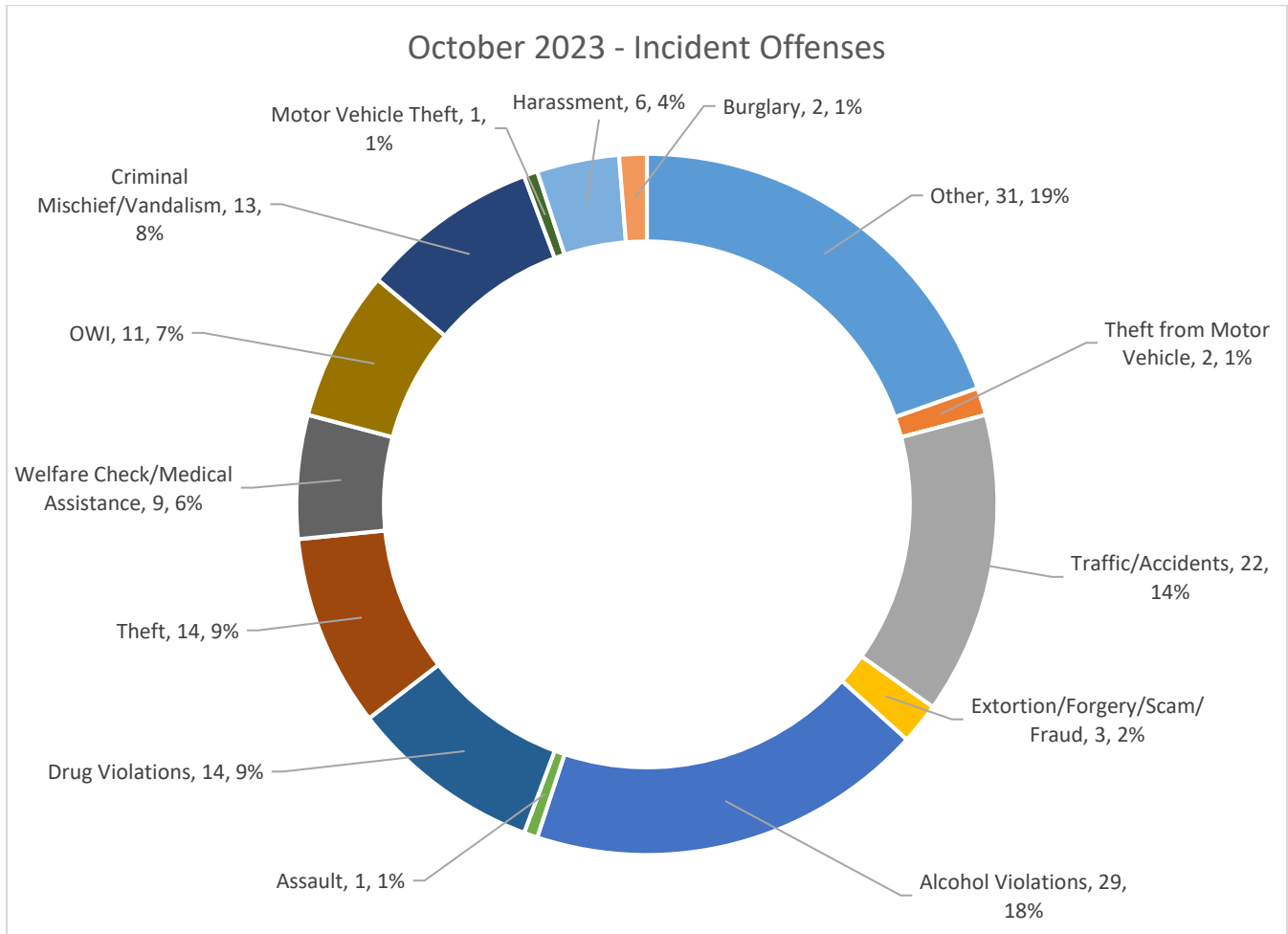
Incident Count by Offense	10/1 – 10/31/22	10/1 – 10/31/23	% Change	YTD 2022	YTD 2023	% Change
Assault	0	1	N/A	12	12	0.0%
Sexual Assault/Fondling	1	0	-100.0%	8	10	25.0%
Harassment	3	6	100.0%	32	57	78.1%
Burglary	0	2	N/A	3	5	66.7%
Theft	26	14	-46.2%	101	79	-21.8%
Theft from Motor Vehicle	1	2	100.0%	10	8	-20.0%
Motor Vehicle Theft	1	1	0.0%	4	6	50.0%
Drug Violations	18	14	-22.2%	130	126	-3.1%
Alcohol Violations	69	29	-58.0%	252	231	-8.3%
Extortion/Forgery/Scam/Fraud	1	3	200.0%	10	13	30.0%
Criminal Mischief/Vandalism	19	13	-31.6%	109	110	0.9%
OWI	13	11	-15.4%	139	118	-15.1%
Traffic and Accidents	38	22	-42.1%	298	276	-7.4%
Welfare Check/Medical Assist	8	9	12.5%	67	83	23.9%
All Other	37	31	-16.2%	245	377	53.9%
Traffic Stops	413	484	17.2%	4,014	5,352	33.3%
New Reports	195	151	-22.6%	1,136	1,273	12.1%
Calls for Service - All	2,642	2,984	12.9%	20,541	28,518	38.8%

Incident Count By Offense refers to reports written by the ISU PD, and a written report may have more than one incident offense contained within it. Timely Crime Warnings that are required to be issued to the University community by the federal Clery Act for crimes such as sex assault can be based upon other sources including calls for service or crimes communicated to other University personnel, and may not correlate with incident count data.



This update was produced for informational purposes only and is limited by the availability of data at the time the report was prepared. Numbers may change as additional information becomes available. Prepared by Alice Fulk Wisner.

ISU PD MONTHLY ACTION UPDATE
10/1 – 10/31/2023

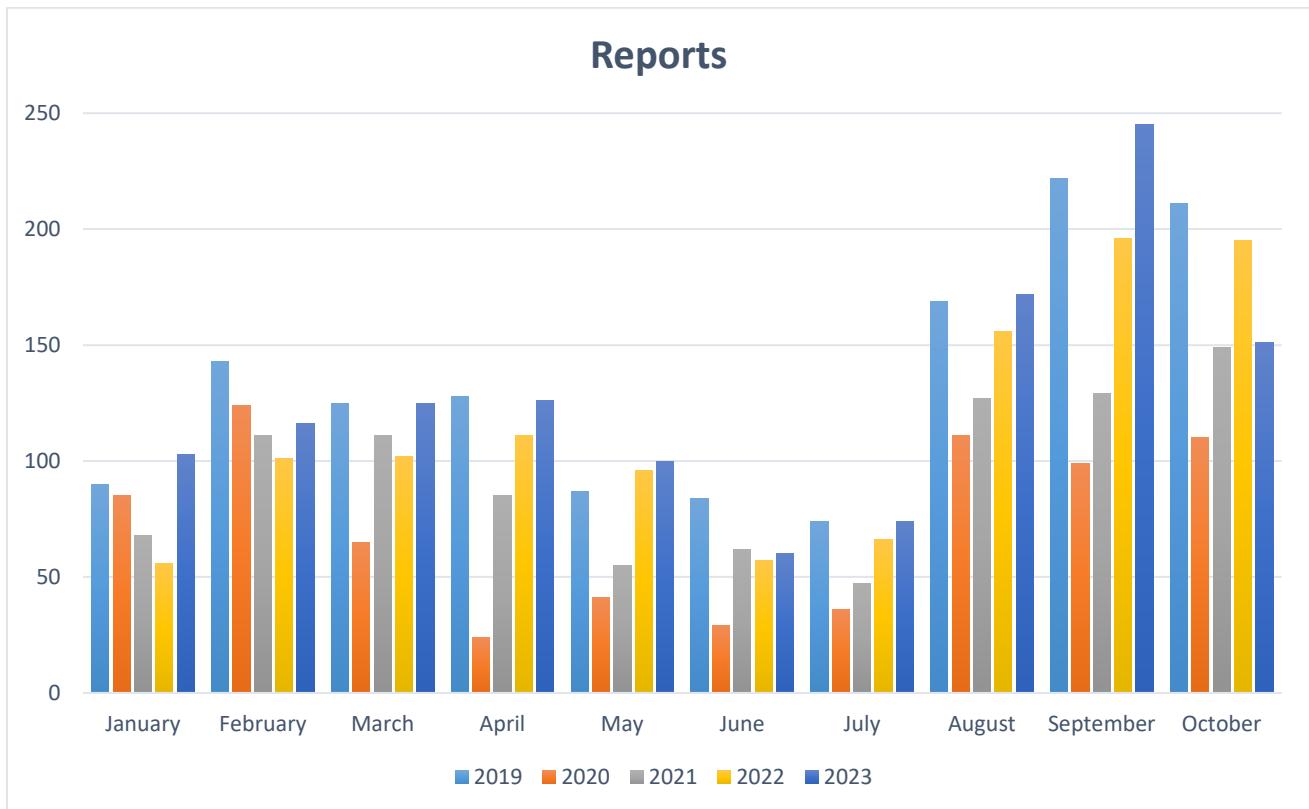
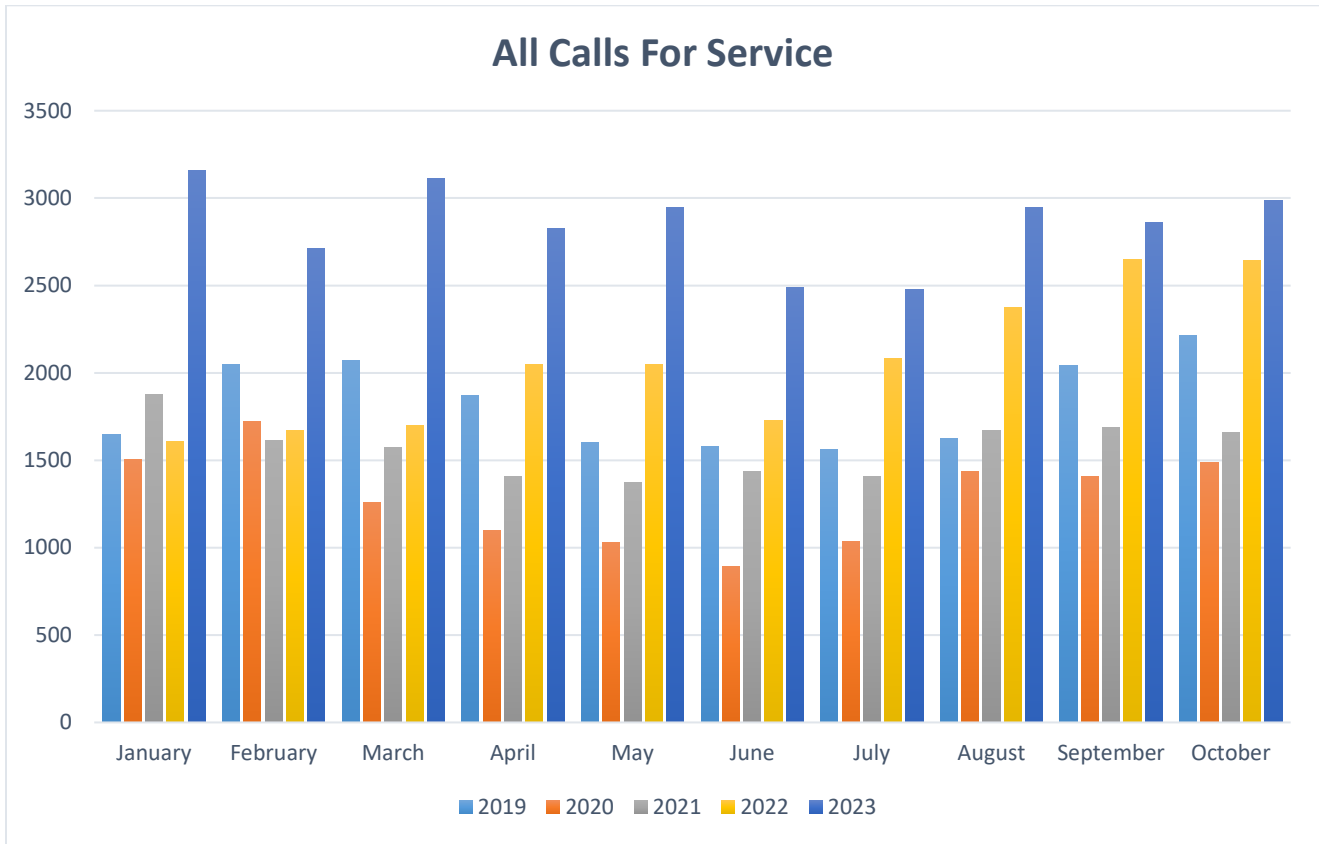


Top 10 calls for service for October 2022 and October 2023

October 2022		October 2023	
Extra Patrol	845	Extra Patrol	1,022
Traffic Stop/Enforcement	413	Traffic Stop/Enforcement	484
General Information/Complaint/Assist	180	Maintenance Alarm	221
Maintenance Alarm	169	General Information/Complaint/Assist	173
Parking Enforcement/Complaint	112	Motorist Assistance	102
Suspicious Behavior/Activity	92	Office Unlock	83
Motorist Assistance	89	Suspicious Behavior/Activity	69
Office Unlock	62	Follow Up	69
Outreach	52	Parking Enforcement/Complaint	57
Possession Alcohol Underage	46	Outreach	55

This update was produced for informational purposes only and is limited by the availability of data at the time the report was prepared. Numbers may change as additional information becomes available. Prepared by Alice Fulk Wisner.

ISU PD MONTHLY ACTION UPDATE
10/1 – 10/31/2023



This update was produced for informational purposes only and is limited by the availability of data at the time the report was prepared. Numbers may change as additional information becomes available. Prepared by Alice Fulk Wisner.

ISU PD MONTHLY ACTION UPDATE
10/1 – 10/31/2023

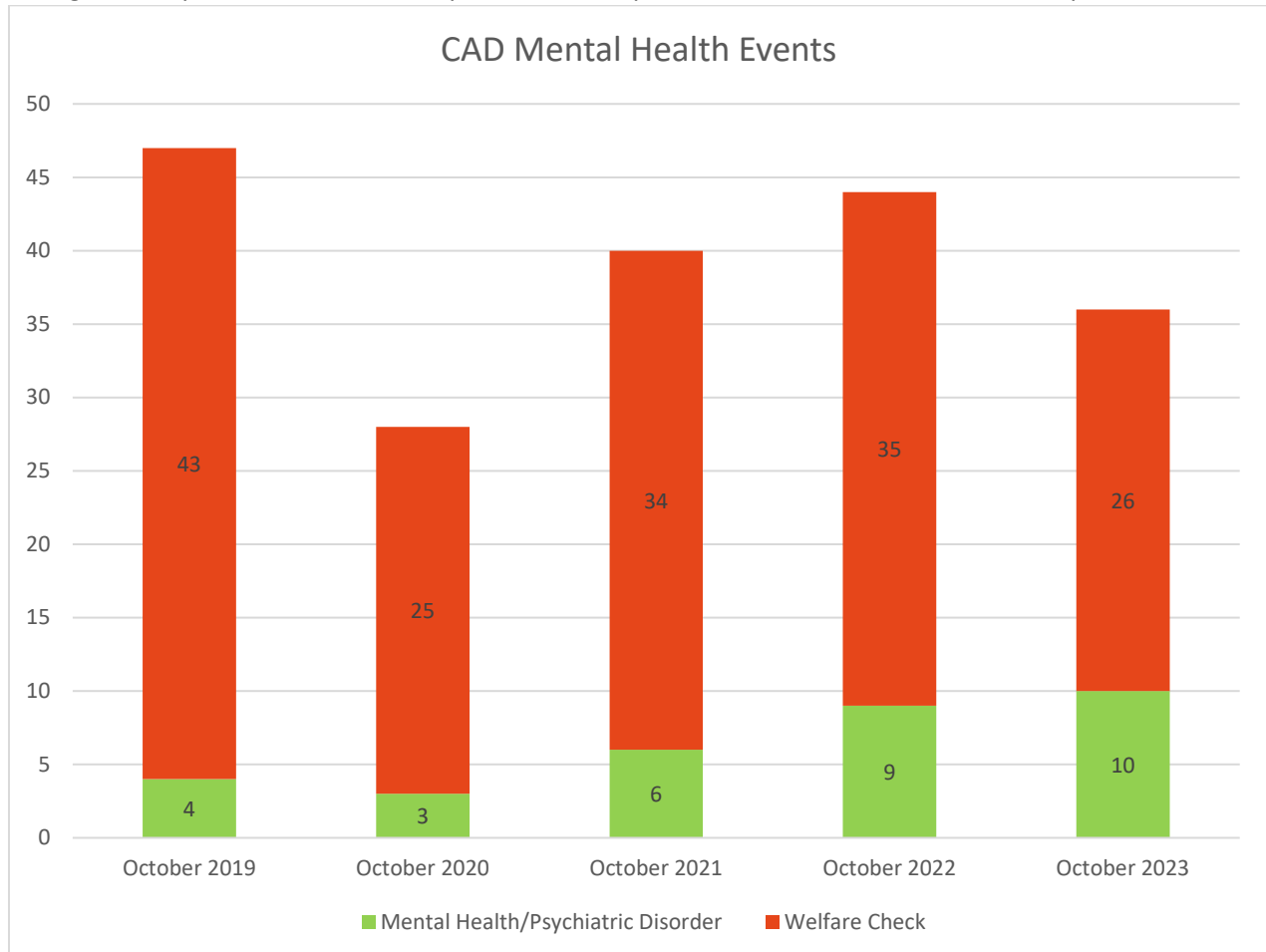
Activity in October of 2023 was higher than that of October of 2022 when looking at traffic stops (up 17.2%) and calls for service (up 12.9%). Reports written were down 22.6%, mostly due to one less home football game in October 2023 compared to last year. Year to date, traffic stops are up 33.3%, case reports are up 12.1%, and calls for service are up 38.8%. Much of the increase in calls for service continues to be due to self-initiated proactive calls. Most categories of incidents were down for October 2023. Notably theft and criminal mischief cases decreased. Year to date, harassment reports are up 78.1% and welfare checks/medical assistance incidents are up 23.9%. Many categories have just minor changes.

There were two bicycles reported stolen during the month of October 2023. Additionally, a tire from a Trek bicycle was taken while it was parked at 83 Frederiksen Court in the same time period as the stolen bike noted below.

Bike Brand	Location	Lock	Value	When Taken
Giant	Design Building	Locked	\$500	1100-1400 10/5
Trek	83 Frederiksen Court	Locked	\$550	1400 10/10 – 0800 10/11

There was one bicycle reported stolen during the month of September 2023. It was stolen from 12 Frederiksen Court and later located locked to a bike rack at the Molecular Biology Building.

The following chart represents October Computer Aided Dispatch events with a mental health aspect from 2019 – 2023.



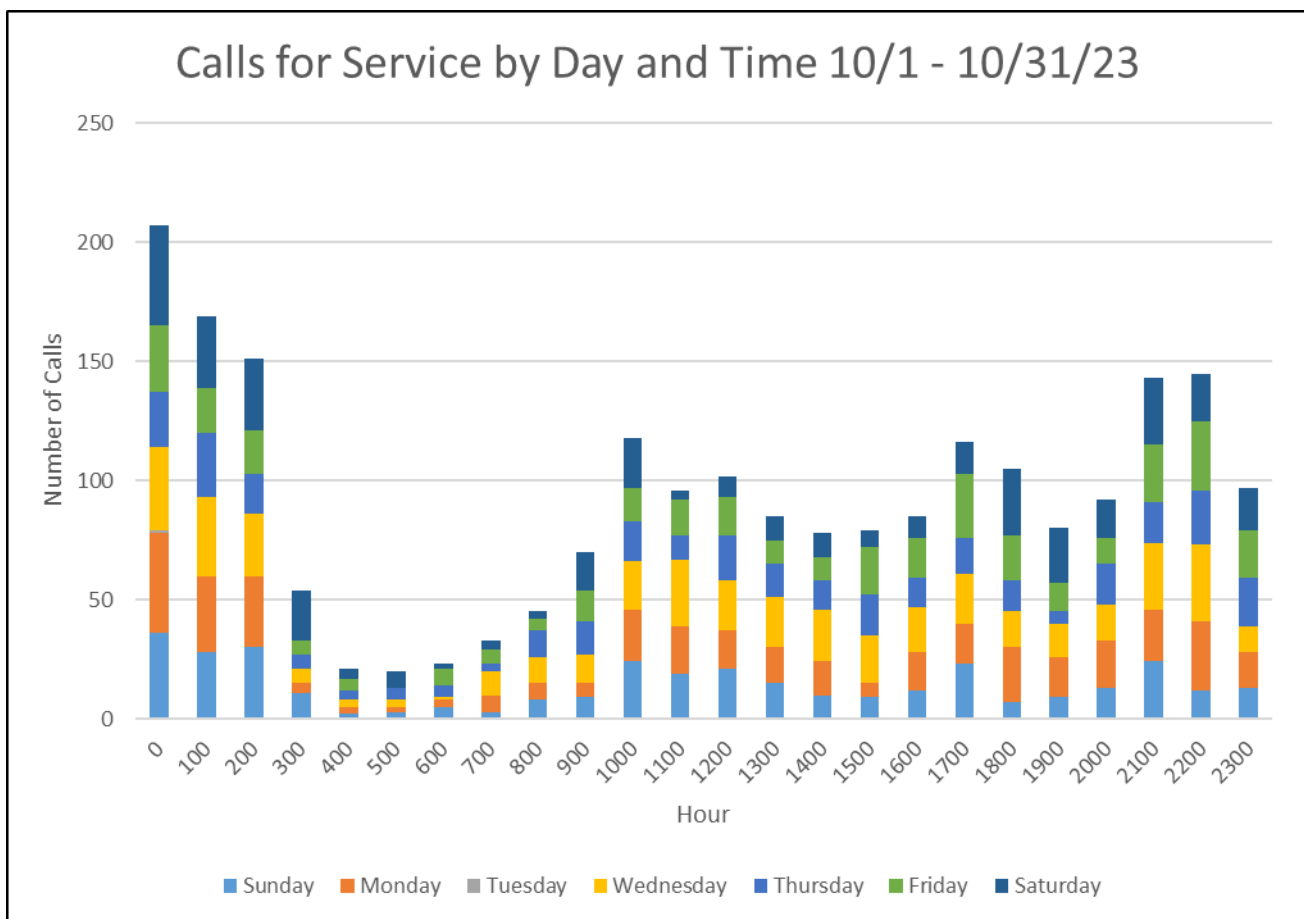
This update was produced for informational purposes only and is limited by the availability of data at the time the report was prepared. Numbers may change as additional information becomes available. Prepared by Alice Fulk Wisner.

ISU PD MONTHLY ACTION UPDATE
10/1 – 10/31/2023

There were eleven OWI incidents for the month of October 2023. Testing was refused in three of the reports. Urine tests were collected in two of the incidents. In the remaining incidents the Datamaster BAC ranged from .124 to .176 with the average being .148. There were thirteen OWI incident counts during October 2022. In three of the incidents BAC testing was refused. One incident involved possible drug usage and a urine sample was collected for testing. In the remaining incidents the Datamaster BAC ranged from .091 to .231, with the average being .138.

There were seventeen public intoxication reports for the month of October 2023. Testing was refused for nine of the incidents. In the remaining incidents the BAC ranged from .109 to .266, with the average BAC being .175. There were fourteen public intoxication reports during October 2022. Testing was unable to be done in three reports and refused in four reports. Additionally, one incident resulted in a juvenile referral. Of the remaining reports, the BAC ranged from .105 to .364 with an average of .209.

The contour chart below shows all calls for service by day and time for the month of October 2023. The busiest times recorded were Sundays during the hours of 0000-0300, Mondays during the hours of 0000-0300 and 2200-2300, Tuesdays between the hours of 0000-0300, 1100-1200, and 2100-2200, Wednesdays between the hours of 0000-0300, 1100-1200, and 2100-2200, Thursdays between the hours of 1700-1800 and 2000-2200, Fridays between the hours of 0000-0100, 1700-1800 and 2200-2300, and Saturdays between the hours of 0000-0300, 1800-1900 and 2100-2200.



This update was produced for informational purposes only and is limited by the availability of data at the time the report was prepared. Numbers may change as additional information becomes available. Prepared by Alice Fulk Wisner.