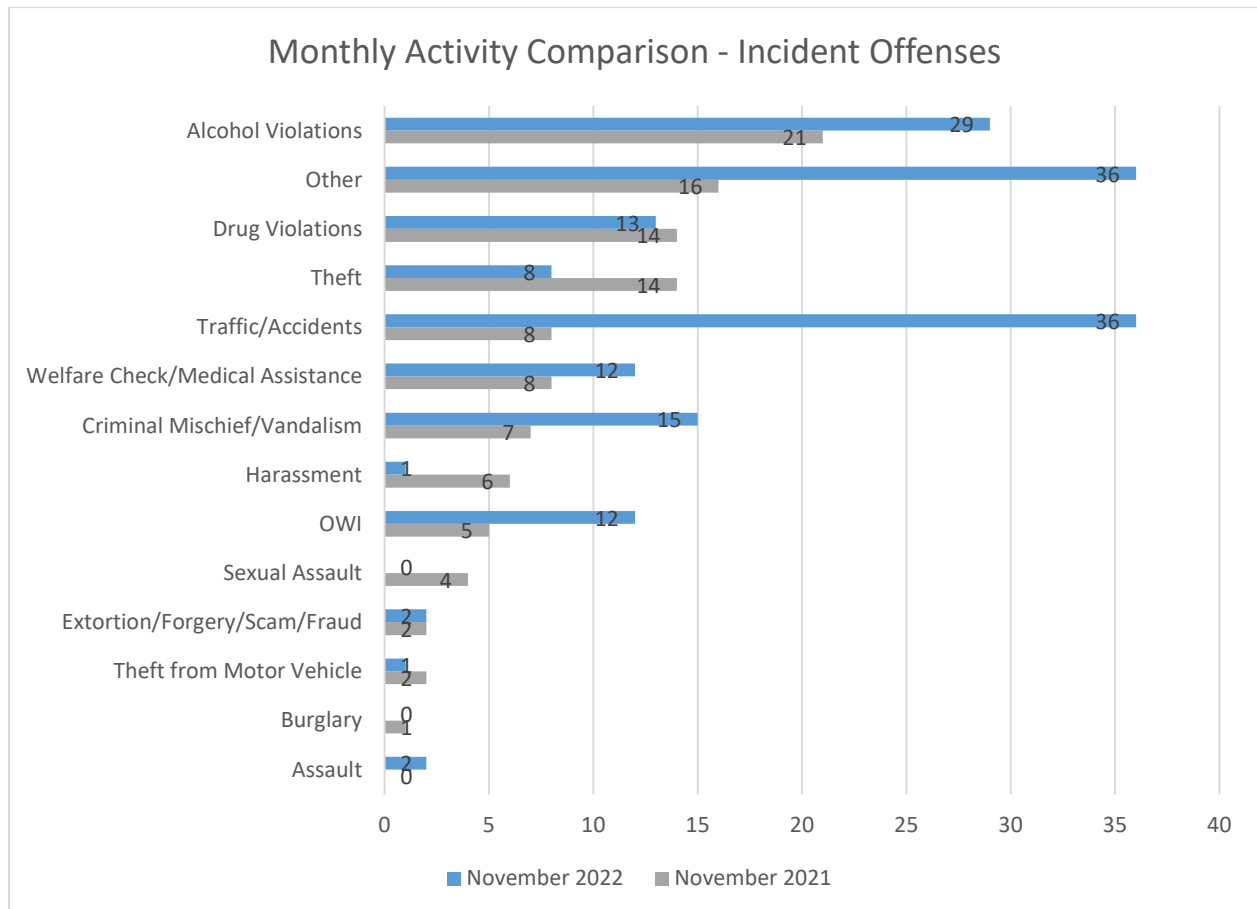


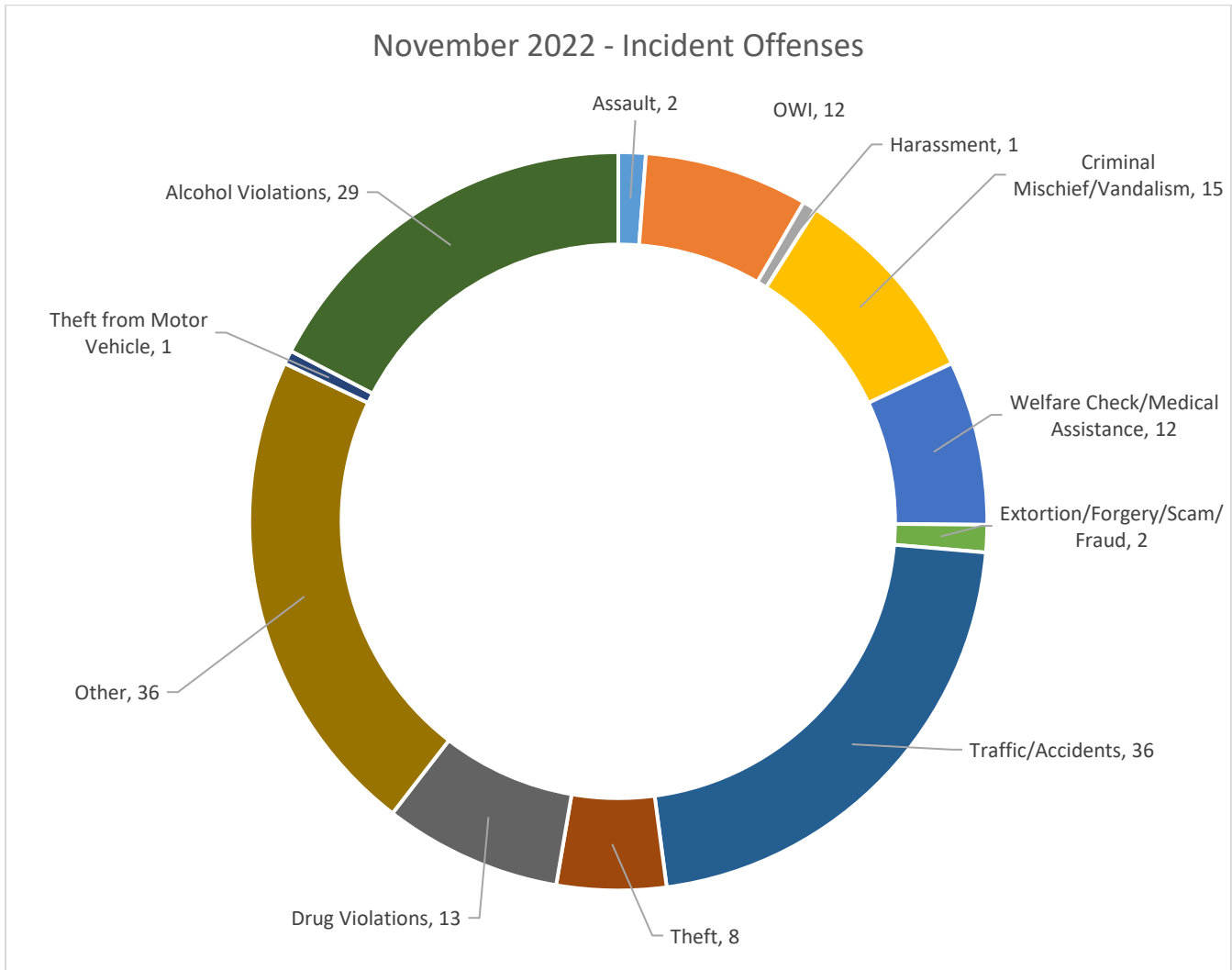
ISU PD MONTHLY ACTION UPDATE
11/1 – 11/30/2022

Incident Count by Offense	11/1-11/30/21	11/1-11/30/22	% Change	YTD 2021	YTD 2022	% Change
Assault	0	2	N/A	6	14	133.3%
Sexual Assault/Fondling	4	0	-100.0%	14	9	-35.7%
Harassment	6	1	-83.3%	43	32	-25.6%
Burglary	1	0	-100.0%	17	3	-82.4%
Theft	14	8	-42.9%	111	108	-2.7%
Theft from Motor Vehicle	2	1	-50.0%	19	11	-42.1%
Motor Vehicle Theft	0	0	N/A	8	4	-50.0%
Drug Violations	14	13	-7.1%	112	143	27.7%
Alcohol Violations	21	29	38.1%	174	281	61.5%
Extortion/Forgery/Scam/Fraud	2	2	0.0%	12	12	0.0%
Criminal Mischief/Vandalism	7	15	114.3%	81	124	53.1%
OWI	5	12	140.0%	76	151	98.7%
Traffic and Accidents	8	36	350.0%	207	324	56.5%
Welfare Check/Medical Assist	8	12	50.0%	96	79	-17.7%
All Other	16	36	125.0%	229	291	27.1%
Traffic Stops	236	426	80.5%	2,921	4,441	52.0%
New Reports	92	127	38.0%	1,036	1,263	21.9%
Calls for Service - All	1,407	2,386	69.6%	17,110	22,919	34.0%



This update was produced for informational purposes only and is limited by the availability of data at the time the report was prepared. Numbers may change as additional information becomes available. Prepared by Alice Fulk Wisner.

ISU PD MONTHLY ACTION UPDATE
11/1 – 11/30/2022

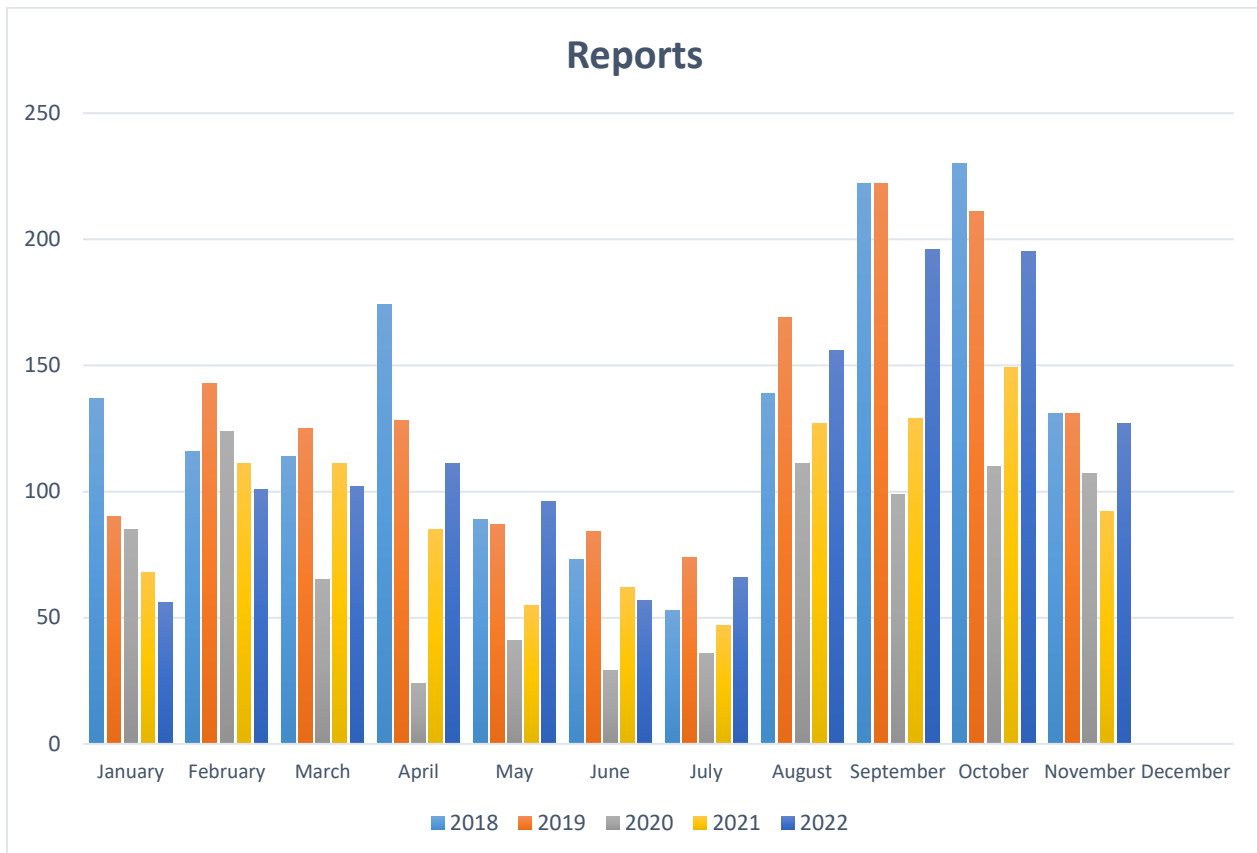
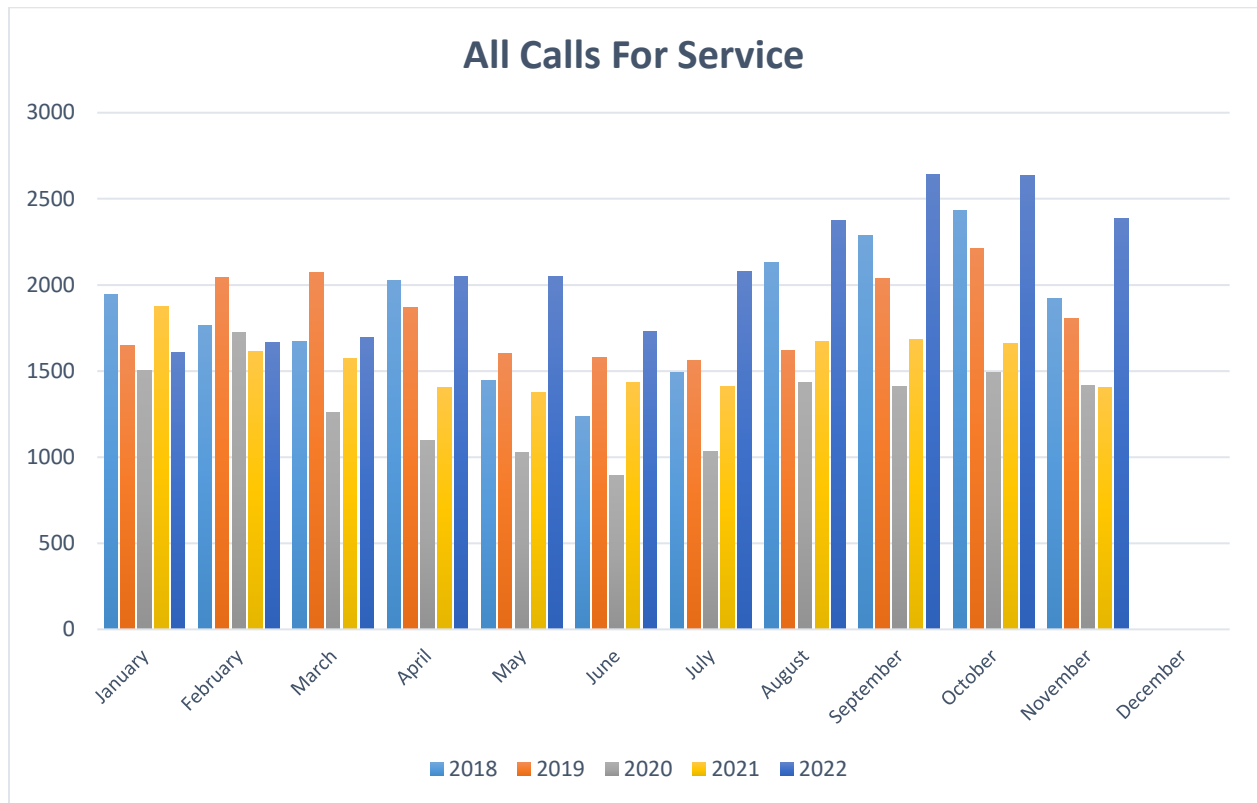


Top 10 calls for service for November 2021 and November 2022

November 2021		November 2022	
Traffic Stop/Enforcement	236	Extra Patrol	732
Extra Patrol	166	Traffic Stop/Enforcement	428
Maintenance Alarm	164	Maintenance Alarm	194
General Information/Complaint/Assist	103	General Information/Complaint/Assist	166
Office Unlock	69	Motorist Assistance	127
Motorist Assistance	68	Parking Enforcement/Complaint	72
Safety Escort	45	Office Unlock	63
Suspicious Behavior/Activity	38	Suspicious Behavior/Activity	59
Finger Printing	34	Vandalism/Criminal Mischief	31
Follow Up	34	Outreach	30

This update was produced for informational purposes only and is limited by the availability of data at the time the report was prepared. Numbers may change as additional information becomes available. Prepared by Alice Fulk Wisner.

ISU PD MONTHLY ACTION UPDATE
11/1 – 11/30/2022



This update was produced for informational purposes only and is limited by the availability of data at the time the report was prepared. Numbers may change as additional information becomes available. Prepared by Alice Fulk Wisner.

ISU PD MONTHLY ACTION UPDATE
11/1 – 11/30/2022

November calls for service were the highest experienced in November for the previous 4 years and were up 69.6% over November of 2021. Traffic stops were up 80.5% and reports written were up 38.0% over November of 2021. Year to date calls for service are up 34.0%, traffic stops are up 52.0%, and reports written are up 21.9%. Reports written for criminal mischief/vandalism incidents, OWI enforcement, alcohol/drug violations, and traffic activity violations were the main drivers for the increased activity.

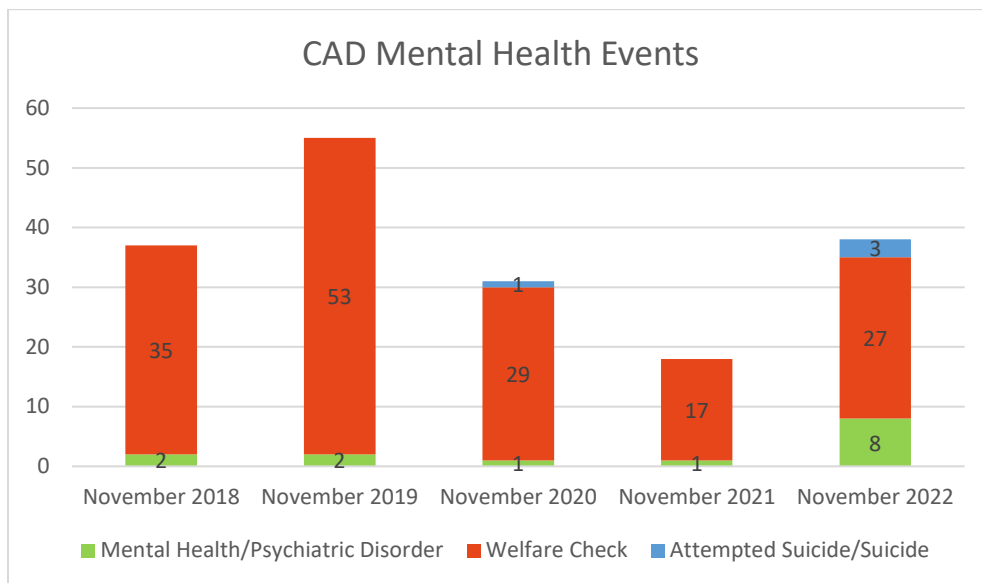
There was one report of stolen a bicycle during November.

Bike Brand	Location	Lock	Value	When Taken
Trek Marlin	Elm Hall	Locked	\$1100	1800 11/23 – 1430 11/24

There were twelve OWI incident counts during November 2022. In two of the incidents BAC testing was refused. One incident involved possible drug usage and a urine sample was collected for testing. In the remaining incidents the Datamaster BAC ranged from .092 to .188, with the average being .132. There were five OWI incidents during November 2021. Testing was refused in one arrest. The BAC ranged from .092 to .153, with the average data master BAC being .119.

There were six public intoxication reports during November 2022. Testing was refused in four reports. In one report the BAC registered above .08, in the other the BAC was .145. During November of 2021 there were three public intoxication arrests. Testing was refused in one of the arrests. In the remaining two arrests, the BAC was .211 for one individual and .261 for the other.

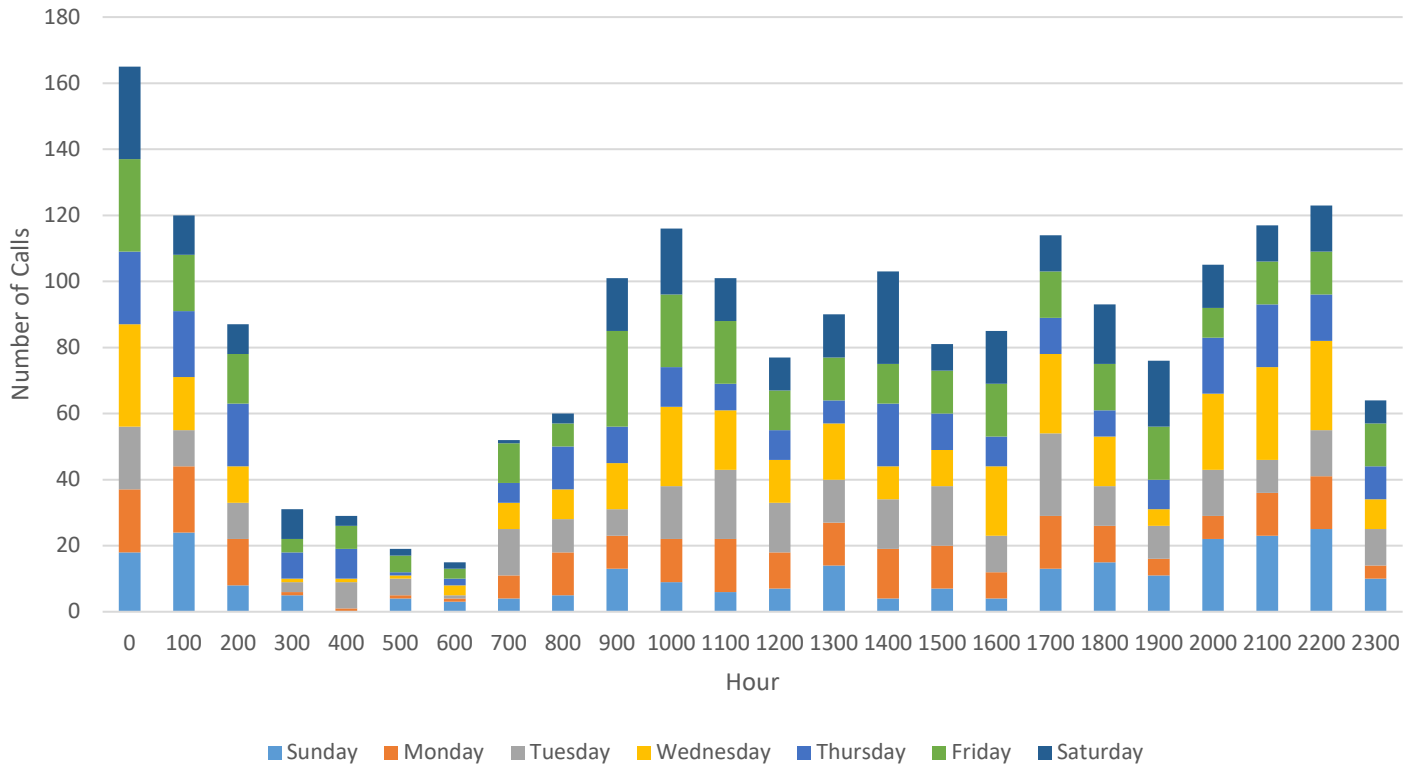
The following graph shows Computer Aided Dispatch events with a mental health aspect for the month of November from 2018 - 2022. Of the mental health related CAD events in November, eleven reports were made.



ISU PD MONTHLY ACTION UPDATE
11/1 – 11/30/2022

The contour chart below shows all calls for service by day and time for the month of November 2022. The busiest times recorded were Sundays between the hours of 0100-0200 and 2000-2300, Tuesdays between the hours of 1100-1200 and 1700-1800, Wednesdays between the hours of 0000-0100, 1000-1100, 1600-1800 and 2000-2300, Thursdays between the hour of 0000-0100, Fridays between the hours of 0000-0100 and 0900-1100, and Saturdays between the hours of 0000-0100 and 1400-1500.

Calls for Service by Day and Time 11/1 - 11/30/22



This update was produced for informational purposes only and is limited by the availability of data at the time the report was prepared. Numbers may change as additional information becomes available. Prepared by Alice Fulk Wisner.